

Empire Gulch claim directions.txt

Access to this property requires a high clearance four wheel drive vehicle.

Please see maps and Google images or route at www.landinsalida.com/listings_Empire_Gulch.html.

From Leadville:

Hwy 24 approx 7 miles south of Leadville.

East on CR7 (The only way you can go.)

Immediate Left through gate on Empire Valley Drive

You will pass through a second gate a few miles up the road.

Stay on Empire Valley Drive through Beaver Lakes Subdivision approx. 6 miles to Gabbro Cir

Right on Gabbro.

At end of cul-de-sac there is a road dropping down to the creek.

Cross creek and bear right onto Forest Service road.

About 100 yards after the creek crossing the road will turn left and climb a steep grade.

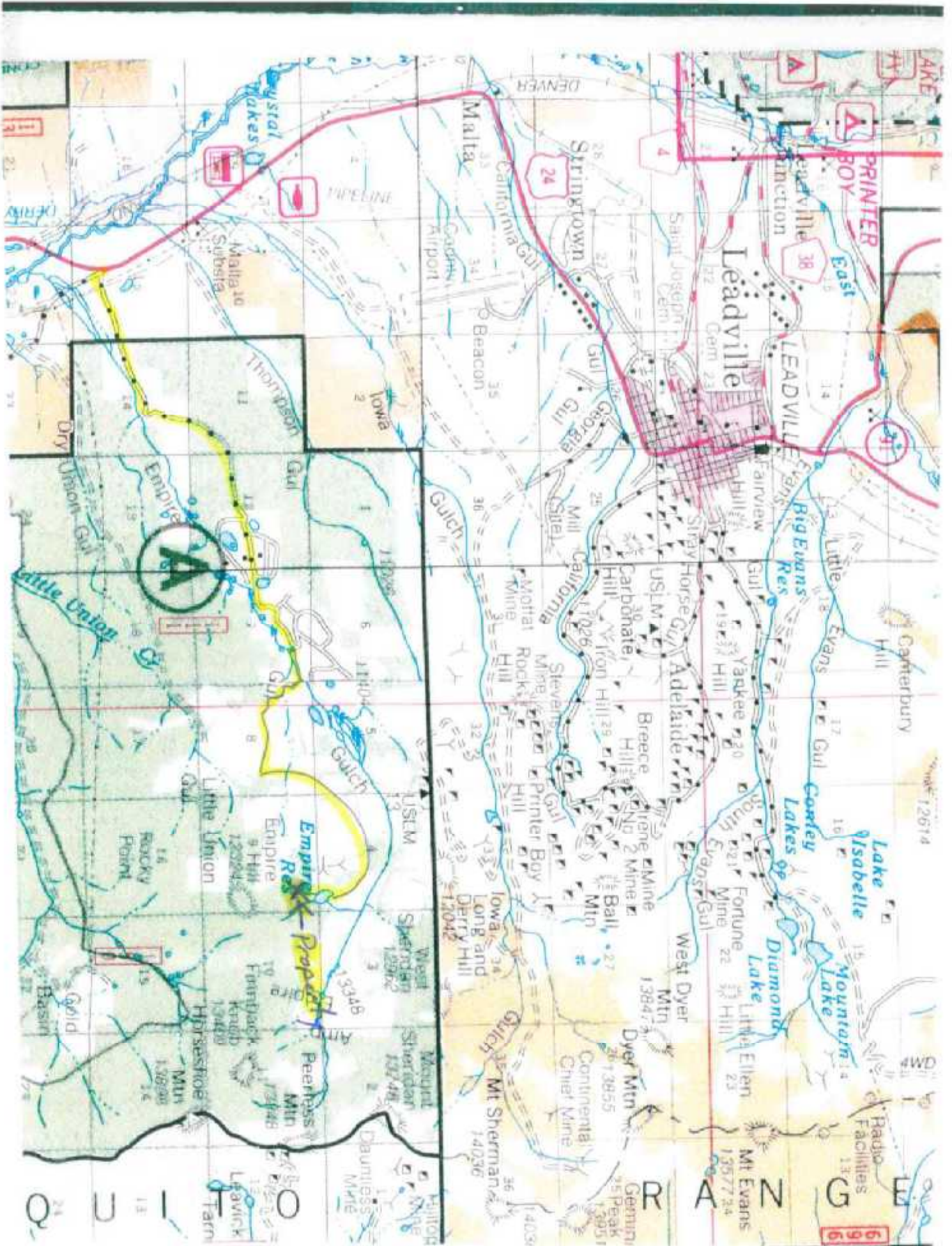
Stay on this road for approximately 1/2 mile. At the end of the clearing take the road to the left.

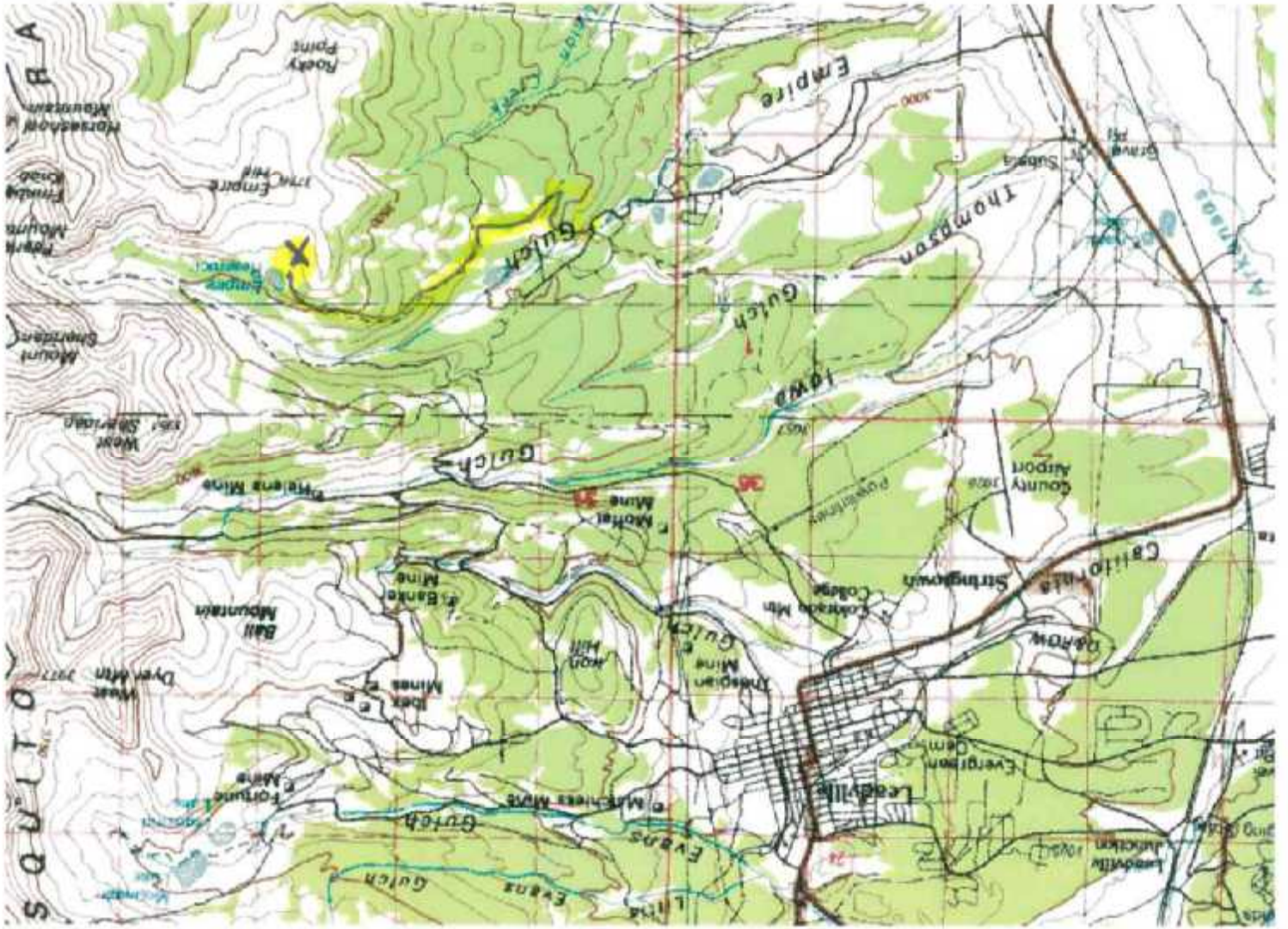
Continue on the road to Empire Reservoir.

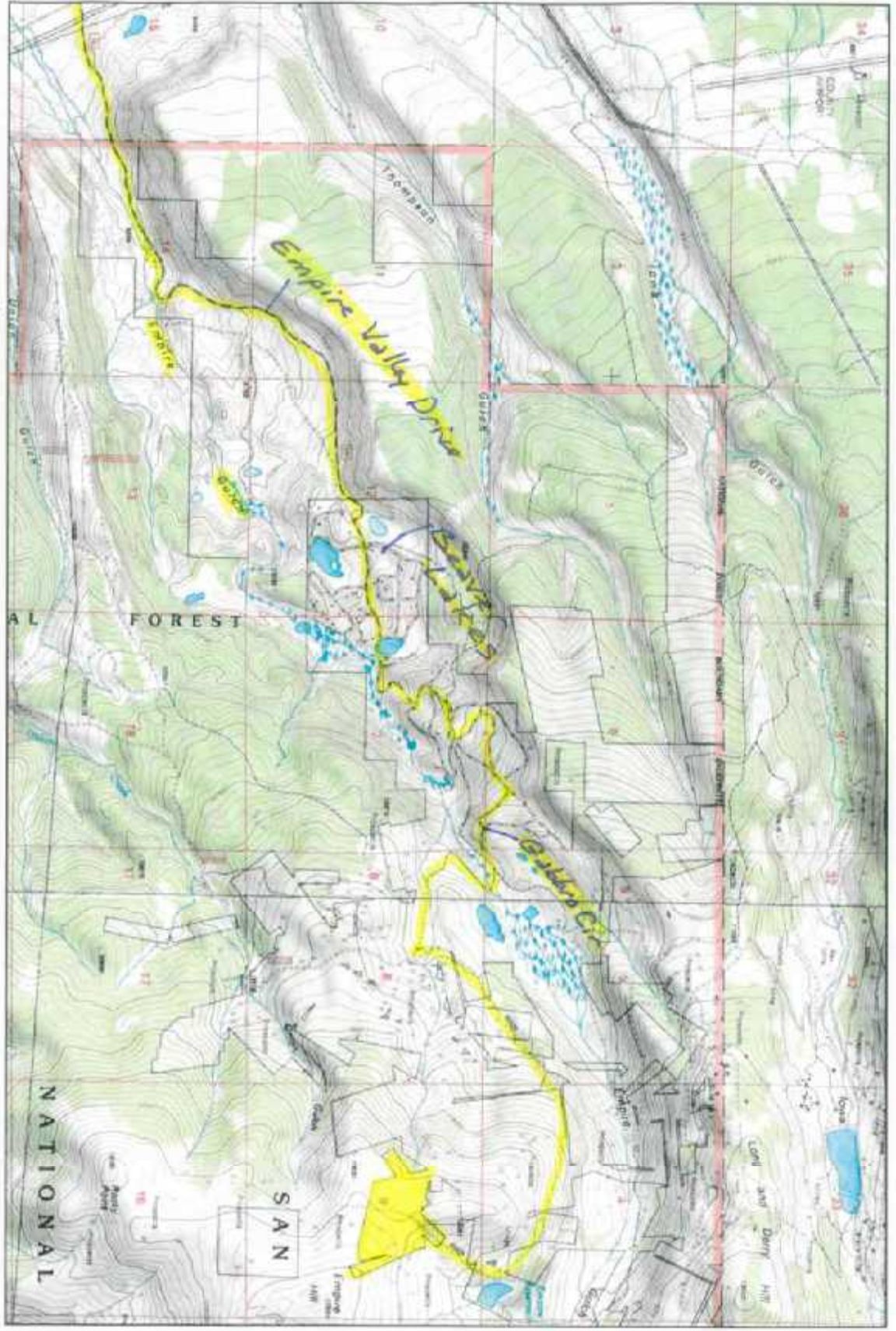
Bear right at reservoir and proceed up the hill to the gate. Once at the gate, you are on the property.

Property goes up to the top of Empire Hill (to the east) and down into the tree line to the west.

See approximate plat image for general property boundary.

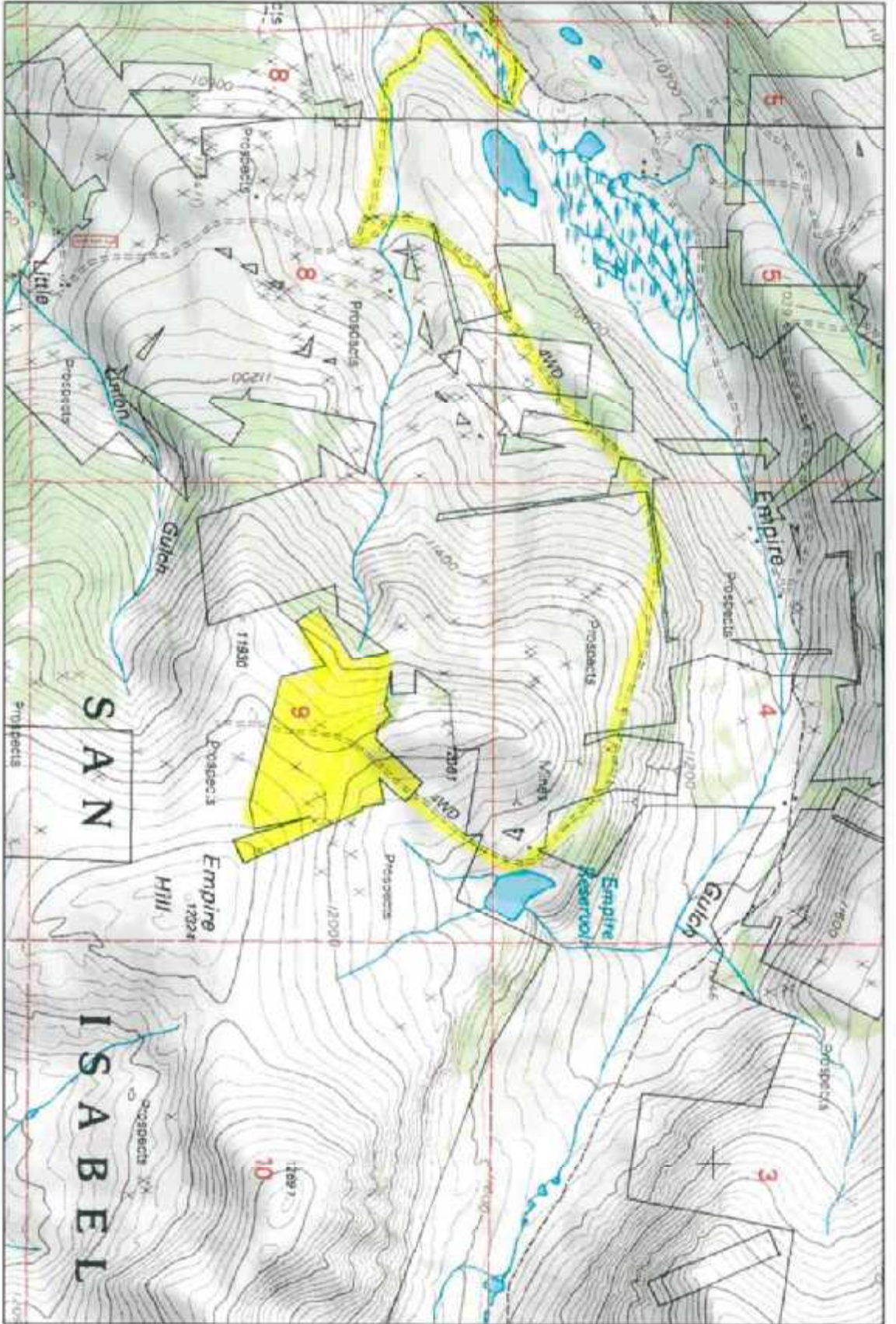






0 1 MI
0 5000 Ft

Map provided by MyTopo.com



0 0.5 MI 3000 FT
Map provided by MyTopo.com





1°57.53' N 106°15'18.46' W

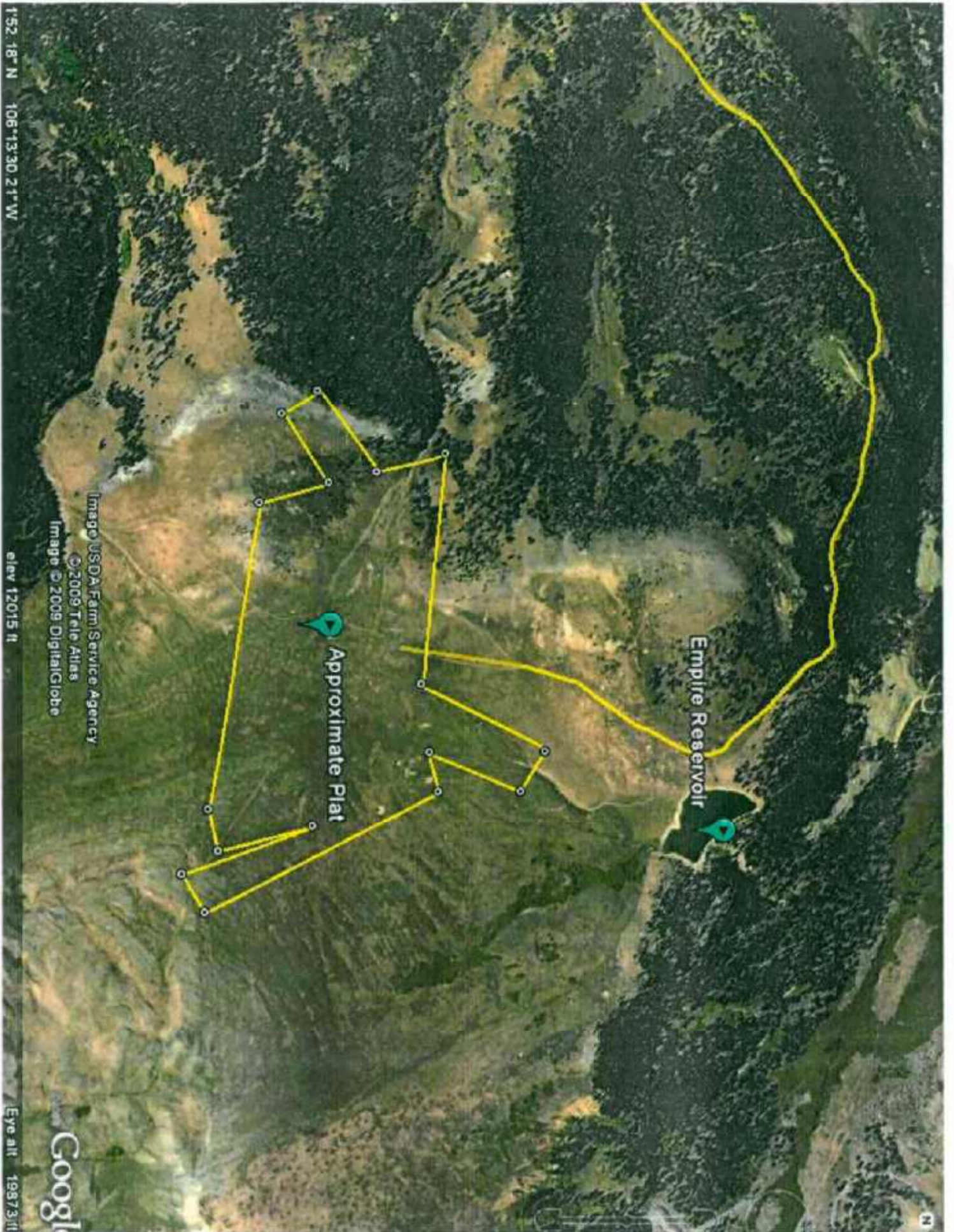
Image © 2009 USDA Farm Service Agency

© 2009 Tele Atlas

Image © 2009 DigitalGlobe

elev 10541 ft

Eye alt 11070 ft



1°52' 18" N 106° 13' 30.21" W

Image © USDA Farm Service Agency

© 2009 Tele Atlas

Image © 2009 DigitalGlobe

elev 12015 ft

Eye alt 19973 ft

Google

1497
ARIZONA PLACER

